

# PLAT OF WATER TOWER COMMONS

A PORTION OF SECTION 33, TOWNSHIP 44 SOUTH, RANGE 43 EAST  
PALM BEACH COUNTY, FLORIDA

199

STATE OF FLORIDA  
COUNTY OF PALM BEACH

THIS PLAT WAS FILED FOR

RECORD AT \_\_\_\_\_

THIS DAY \_\_\_\_ OF \_\_\_\_

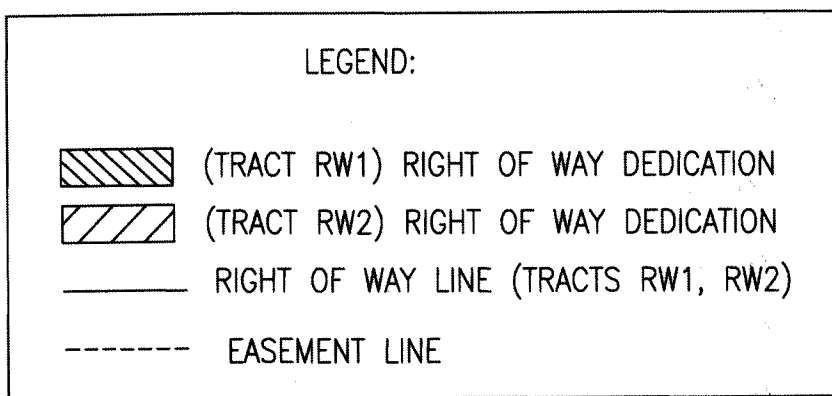
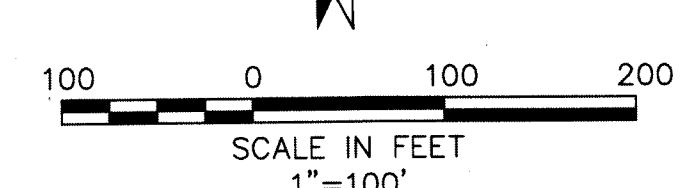
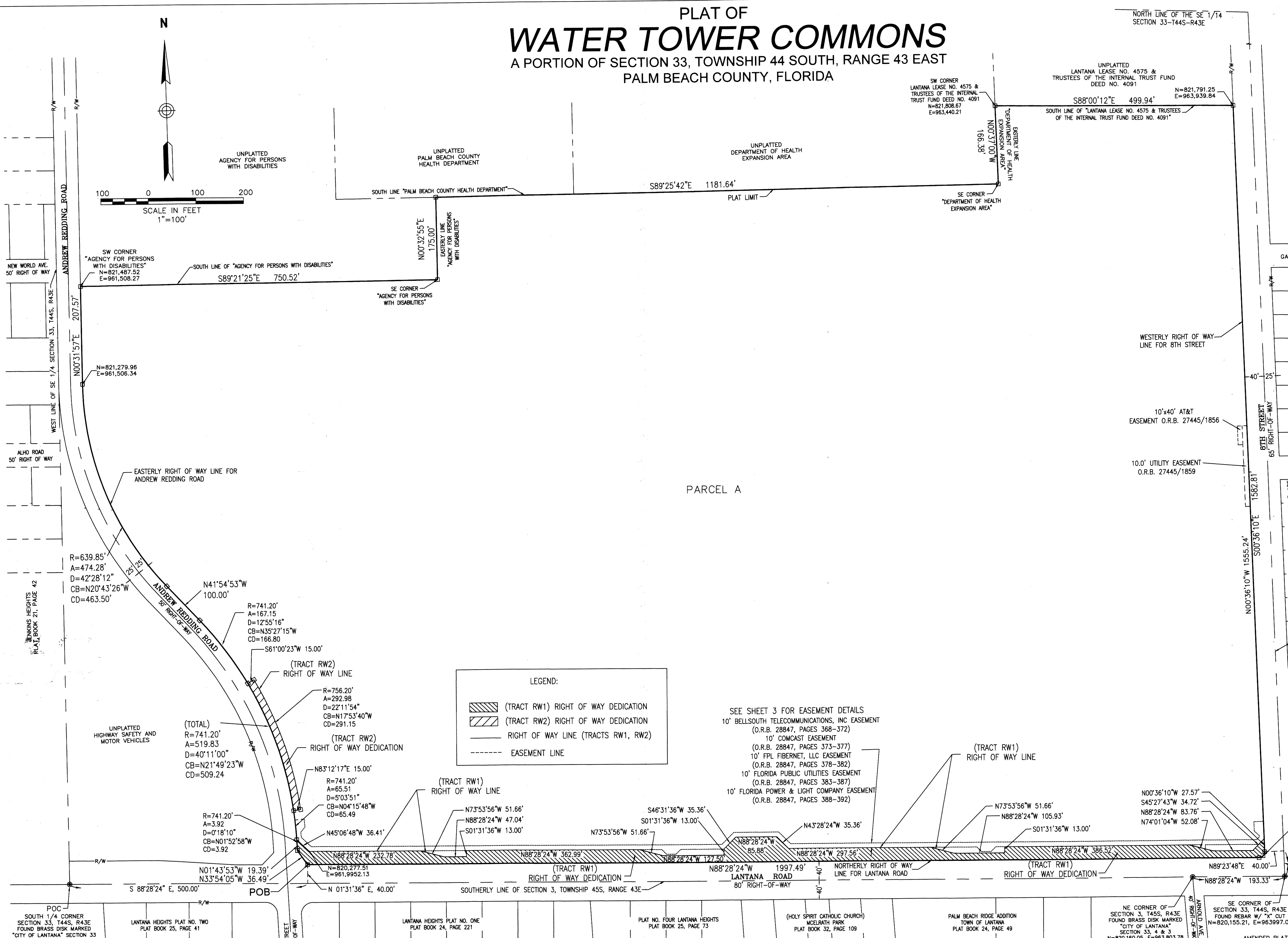
A.D. 20\_\_ AND DULY

RECORDED IN PLAT BOOK \_\_\_\_  
ON PAGES \_\_\_\_ AND \_\_\_\_

(NAME)  
CLERK & COMPTROLLER

BY: \_\_\_\_\_  
DEPUTY CLERK

SHEET 2 OF 3



SEE SHEET 3 FOR EASEMENT DETAILS

- 10' BELLSOUTH TELECOMMUNICATIONS, INC EASEMENT (O.R.B. 28847, PAGES 368-372)
- 10' COMCAST EASEMENT (O.R.B. 28847, PAGES 373-377)
- 10' FPL FIBERNET, LLC EASEMENT (O.R.B. 28847, PAGES 378-382)
- 10' FLORIDA PUBLIC UTILITIES EASEMENT (O.R.B. 28847, PAGES 383-387)
- 10' FLORIDA POWER & LIGHT COMPANY EASEMENT (O.R.B. 28847, PAGES 388-392)

**LEGEND AND ABBREVIATIONS**

□ = SET 4" x 4" CM PRM-LB 2936	PB = PAGE
R = RADIUS	PG = PLAT BOOK
A = ARC LENGTH	R/W = RIGHT OF WAY
D = CENTRAL ANGLE	W.S. = WATER SURFACE
CB = CHORD BEARING	(NR) = NON-RADIAL LINE
CD = CHORD DISTANCE	(RAD) = RADIAL LINE
N.T. = NON-TANGENT	POB = POINT OF BEGINNING
LB = LICENSED BUSINESS	POC = POINT OF COMMENCEMENT
PRM = PERMANENT REFERENCE MONUMENT	P.C. = POINT OF CURVATURE
PCP = PERMANENT CONTROL POINT	P.T. = POINT OF TANGENCY
ORB = OFFICIAL RECORDS BOOK	P.R.C. = POINT OF REVERSE CURVATURE
U.E. = UTILITY EASEMENT	P.C.C. = POINT OF COMPOUND CURVATURE
D.E. = DRAINAGE EASEMENT	F.I. = POINT OF INTERSECTION
CCR = CERTIFIED CORNER RECORD	
CM = CONCRETE MONUMENT	

FOR NOTES AND LEGAL DESCRIPTION SEE SHEET 1 OF 3  
FOR EASEMENT DETAIL SEE SHEET 3 OF 3

PREPARING SURVEYOR AND MAPPER'S STATEMENT:  
THIS INSTRUMENT WAS PREPARED BY:  
THOMAS A. ENGLISH  
PROFESSIONAL SURVEYOR AND MAPPER NO. LS6930  
CARNAHAN, PROCTOR AND CROSS, INC.  
814 SOUTH MILITARY TRAIL  
DEERFIELD BEACH, FL 33442

**CARNAHAN-PROCTOR-CROSS, INC.**  
CONSULTING ENGINEERS-SURVEYORS-PLANNERS  
814 South Military Trail, Deerfield Beach, FL 33442  
PHONE: (954)972-3959 FAX: (954)972-4178  
Certificate of Authorization: LB2936  
www.carnahan-proctor.com